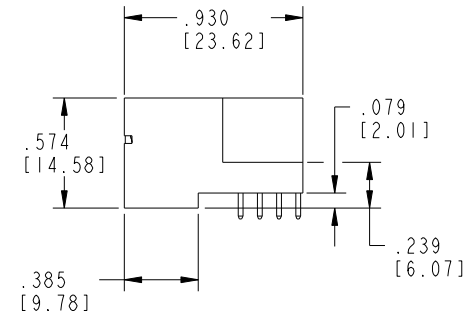
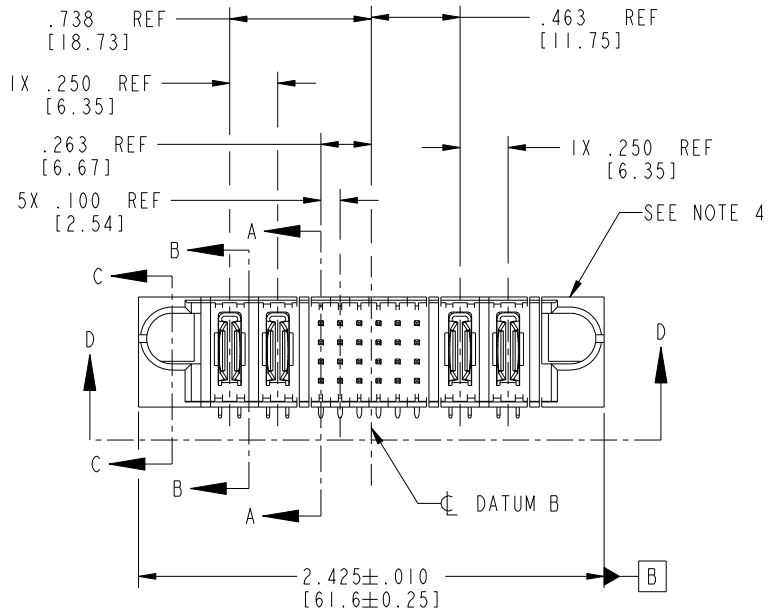
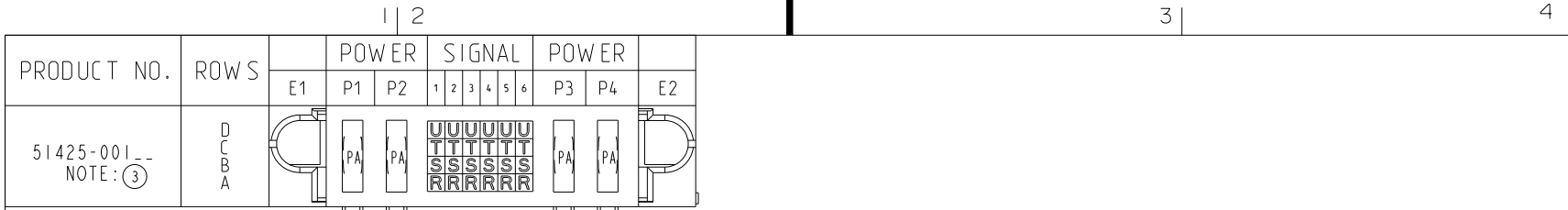


Tous droits strictement réservés. Reproduction ou communication a des tiers interdite sous quelque forme que ce soit sans autorisation écrite du propriétaire. Propriété de c FCI. Droits de reproduction FCI.



All rights strictly reserved. Reproduction or issue to third parties in any form whatever is not permitted without written authority from the proprietor. Property of FCI. Copyright FCI.



CODE	DIM "M" MATING LENGTH	DIM "T" TAIL LENGTH	CONTACT TYPE
R	.270 [6.86]	.135 [3.43]	SIGNAL
S	.270 [6.86]	.135 [3.43]	SIGNAL
T	.270 [6.86]	.135 [3.43]	SIGNAL
U	.270 [6.86]	.135 [3.43]	SIGNAL
PA	N/A [N/A]	.135 [3.43]	POWER

mat'l code				SEE NOTE 2		tolerances unless otherwise specified		CUSTOMER		 www.fciconnect.com	
ltr	ecn no.	dr	date	linear	.XX±.01/0.X±0.3		COPY		title		
A	V02392	JRW	10/9/00		.XXX±.005/0.XX±0.13		projection		2P + 24S + 2P		
B	V12515	JWS	10/29/01	angles	.XXX±.0020/0.XXX±0.051				RIGHT ANGLE SOLDER HEADER		
C	DG05-0242	SJ	07/26/05		0° ± 2°				product family PwrBlade code		
D	DG06-0011	CS	01/12/06	dr	J. SHAFFER	10/29/01	INCH/MM		size		213
E	DG08-0266	W D	09/21/08	engr	J. ALLISON	10/29/01	scale		dwg no		sheet
				chr	J. ALLISON	10/29/01	1:1		A		1 of 4
				appd	J. ALLISON	10/29/01			51425		
sheet index	revision sheet	E	E	E	E						
		1	2	3	4						

Pro/E

PDM: Rev: E

STATUS: Released

Printed: Sep 26, 2008

cage code 28526

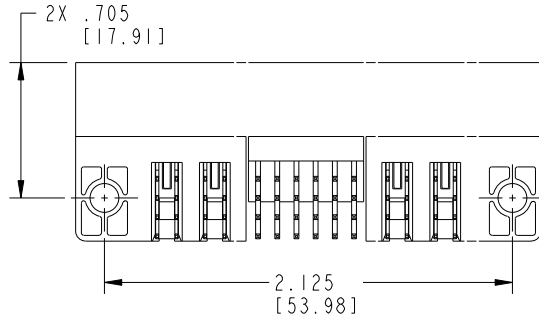
Tous droits strictement réservés. Reproduction ou communication a des tiers interdite sous quelque forme que ce soit sans autorisation écrite du propriétaire. Propriété de c FCI. Droits de reproduction FCI.



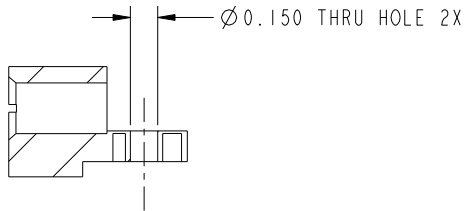
All rights strictly reserved. Reproduction or issue to third parties in any form whatever is not permitted without written authority from the proprietor. Property of FCI. Copyright FCI.

PRODUCT NUMBER

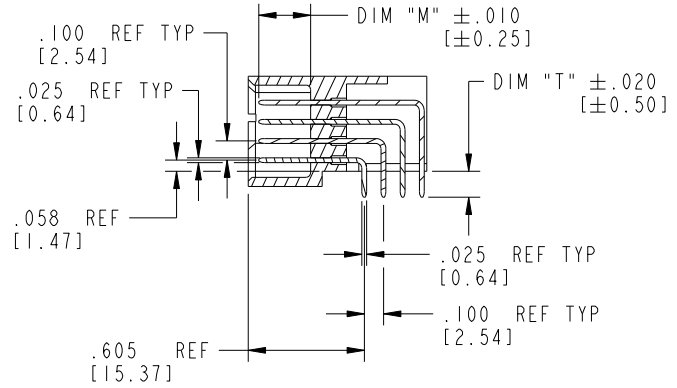
51425-001
NOTE: ③



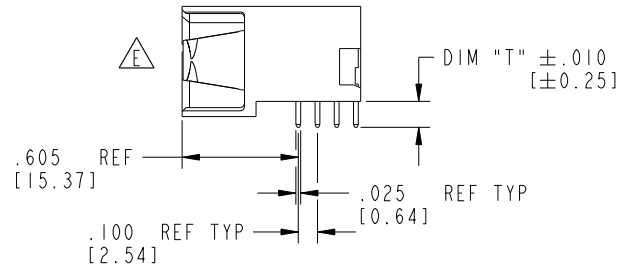
SECTION D-D



SECTION C-C



SECTION A-A



SECTION B-B

mat'l code		SEE NOTE 2		tolerances unless otherwise specified		CUSTOMER		 www.fciconnect.com	
ltr	ecn no.	dr	date	linear	.XX±.01/0.X±0.3	COPY		title	
E					.XX±.005/0.XX±0.13	projection		2P + 24S + 2P	
				angles	.XXX±.0020/0.XXX±0.051			RIGHT ANGLE SOLDER HEADER	
				dr	J. SHAFFER 10/29/01	INCH/MM		product family	
				engr	J. ALLISON 10/29/01	scale		PwrBlade	
				chr	J. ALLISON 10/29/01	1:1		code	
				appd	J. ALLISON 10/29/01			213	
sheet index		revision sheet				A		51425	
								2 of 4	

Pro/E

PDM: Rev: E

STATUS: Released

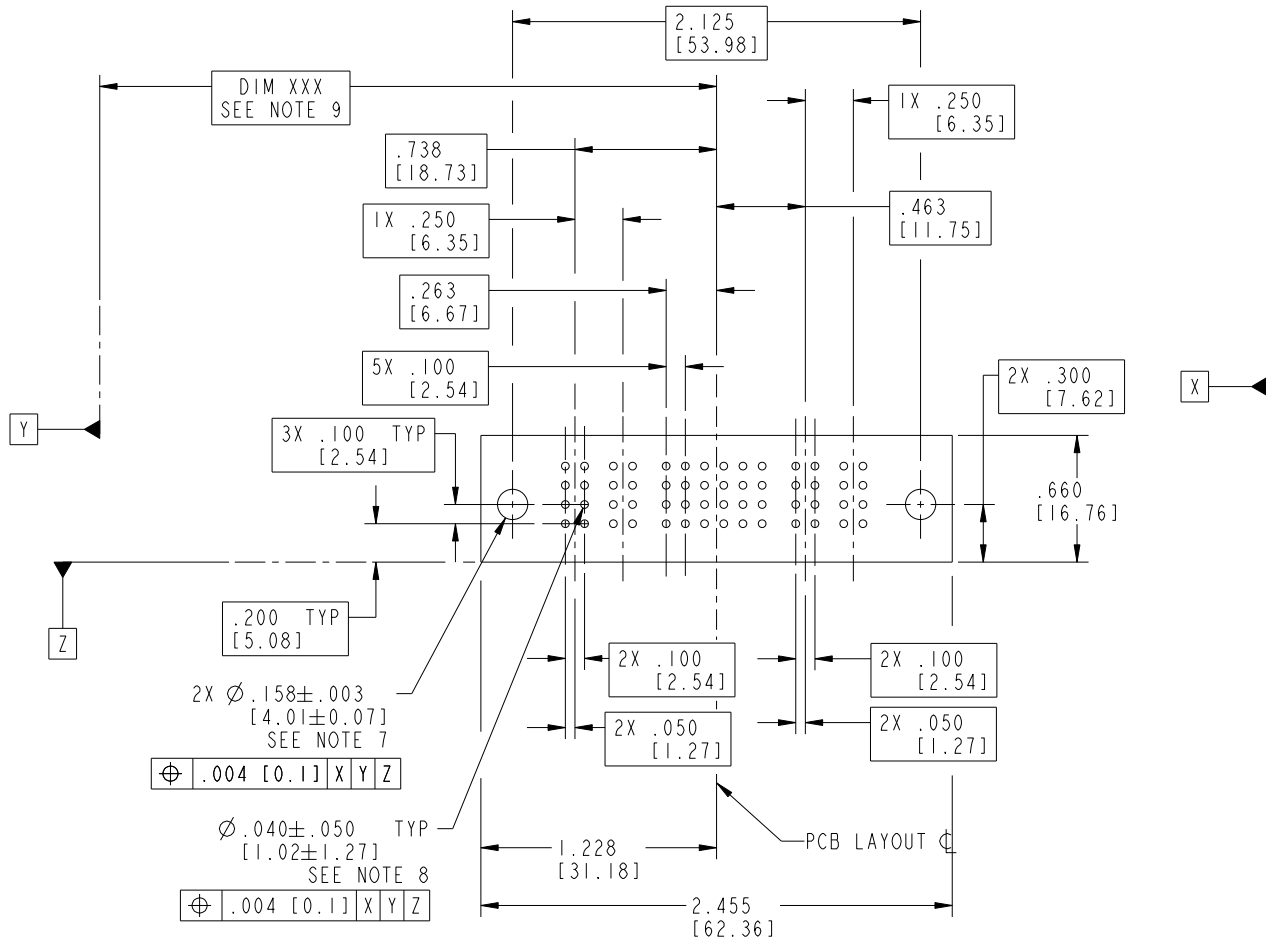
Printed: Sep 26, 2008

Tous droits strictement réservés. Reproduction ou communication a des tiers interdite sous quelque forme que ce soit sans autorisation écrite du propriétaire. Propriété de c FCI. Droits de reproduction FCI.



All rights strictly reserved. Reproduction or issue to third parties in any form whatever is not permitted without written authority from the proprietor. Property of FCI. Copyright FCI.

PRODUCT NUMBER
51425-001--
NOTE: ③



RECOMMENDED PCB LAYOUT

mat'l code		SEE NOTE 2		tolerances unless otherwise specified		CUSTOMER		 www.fciconnect.com	
ltr	ecn no.	dr	date	linear	.XX±.01/0.X±0.3	projection	title 2P + 24S + 2P		
E				angles	.XXX±.005/0.XX±0.13 .XXX±.0020/0.XXX±0.051	 INCH/MM	RIGHT ANGLE SOLDER HEADER		
				dr	J. SHAFFER 10/29/01	scale	product family PwrBlade	code	
				enrg	J. ALLISON 10/29/01	1:1	size	213	
				chr	J. ALLISON 10/29/01		dwg no	51425	sheet
				appd	J. ALLISON 10/29/01			3 of 4	
sheet index	revision sheet								

Pro/E

PDM: Rev: E

STATUS: Released

Printed: Sep 26, 2008

cage code 28526

PRODUCT NUMBER
 51425-001--
 NOTE: ③

NOTES:

1. DIMENSIONS AND TOLERANCES ARE IN ACCORDANCE WITH ASME Y14.5M, 1994 UNLESS OTHERWISE SPECIFIED.

CONNECTORS NOTES:

② HOUSING MATERIAL: UL 94 V-0 GLASS FILLED HIGH TEMP THERMO PLASTIC
 POWER CONTACT MATERIAL: COPPER ALLOY
 SIGNAL PIN MATERIAL: COPPER ALLOY

⚠③ SEE ITEM 1 & 2 IN PRINT 10064183 FOR PLATING SPEC OF 51425-001 AND 51425-001LF RESPECTIVELY.

4. "MANUFACTURER" NAME, P/N, AND DATE CODE TO APPEAR ON THIS SURFACE.

5. PRODUCT SPECIFICATION GS-12-149.

PCB - NOTES:

6. ALL HOLE DIAMETERS ARE FINISHED HOLE SIZE.

⑦ HOLD DOWN THROUGH HOLES ARE UNPLATED.

⑧ $\varnothing .0453 \pm 0.0010$ [1.151 \pm 0.025] DRILLED HOLES PLATED WITH
 0.0003 [0.008] MIN SnPb OVER .001 [0.03]
 TO .003 [0.08] Cu PLATING TO ACHIEVE
 $\varnothing .040 \pm .003$ [1.02 \pm .07] HOLE.

⑨ "DIM XXX" TO BE DETERMINED BY THE CUSTOMER.

10. ⚠SYMBOL WILL BE NEXT TO ANY DIMENSION, VIEW, OR NOTE WHICH HAS BEEN MODIFIED WITH THE CURRENT DRAWING REVISION.

mat'l code		SEE NOTE 2		tolerances unless otherwise specified		CUSTOMER		FCI		www.fciconnect.com	
ltr	ecn no.	dr	date	linear	.XX±.01/0.X±0.3	COPY		title		2P + 24S + 2P	
E				projection	.XXX±.005/0.XX±0.13			RIGHT ANGLE SOLDER HEADER		product family	
				angles	.XXX±.0020/0.XXX±0.051			PwrBlade		code	
				dr	J. SHAFFER 10/29/01	INCH/MM		size		213	
				enrg	J. ALLISON 10/29/01	scale		dwg no		sheet	
				chr	J. ALLISON 10/29/01	1:1		A		4 of 4	
				appd	J. ALLISON 10/29/01			51425			
sheet index	revision sheet										

Tous droits strictement réservés. Reproduction ou communication a des tiers interdite sous quelque forme que ce soit sans autorisation écrite du propriétaire. Propriété de c FCI. Droits de reproduction FCI.



All rights strictly reserved. Reproduction or issue to third parties in any form whatever is not permitted without written authority from the proprietor. Property of FCI. Copyright FCI.